



1721 19th St.

Bakersfield, CA 93301

(661) 324-1369

356 Seated Capacity

700 Standing Capacity

Stage Size: 19'D x 32'W



Stage/Audio Power:

Isolated Power transformer to:

2 - 20 amp quad boxes Stage Left

2 -30 amp twist lock NEMA L14-30P Locking Plug

Non-Isolated Power:

5 - 20 amp outlets in stage

FOH Power:

4-20 amp outlets at FOH

Speaker/Amplification System

4 - EAW KF730, 1 - EAW KF737 flown on 16' Sumner Eventer Lift SR & SL

Powered by : QSC GX5 700 watt Power amps (Low)

Lab Gruppen C88:4 amp (MF/ HF)

1 - EAW UX8800 Speaker/System processor

2 - EAW BH822e Sub Woofers in stage

Subs powered by: 2- QSC GX5 700 watt Power amps x2

4 - EAW UB 52 Front Fills- Powered by Crown CTS 2000

4 - EAW LA 212- 12" Monitors powered by Lab Gruppen C68:4 amps

2 - EAW NT26 Powered Monitors

Outputs: Left Array, Right Array, Subs, Front Fills, Monitors 1-6

Audio Mixing Board - Midas M32R (FOH)



Microphone Inventory:

- 1 - Shure Beta 52a
- 6 - Shure SM58
- 5 - Shure SM57
- 5 - Shure SM81
- 6 - Sennheiser e604
- 2 - Shure SLXD4D Wireless Receiver
- 4 - Shure SM58 Wireless

Direct Input Inventory:

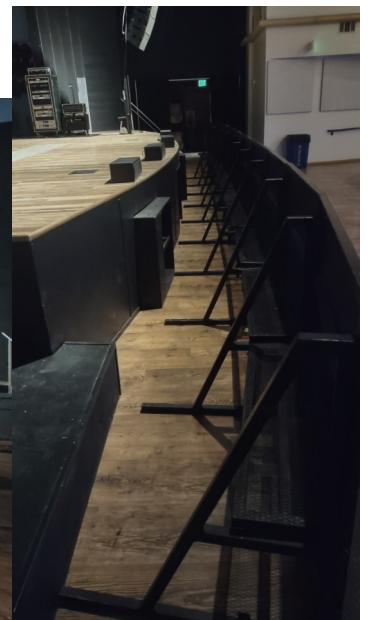
- 3 - Radial Engineering JDI Passive DI
- 3 - Countryman Type 85 FET DI Box

Drum Riser:

7'x7'x1'



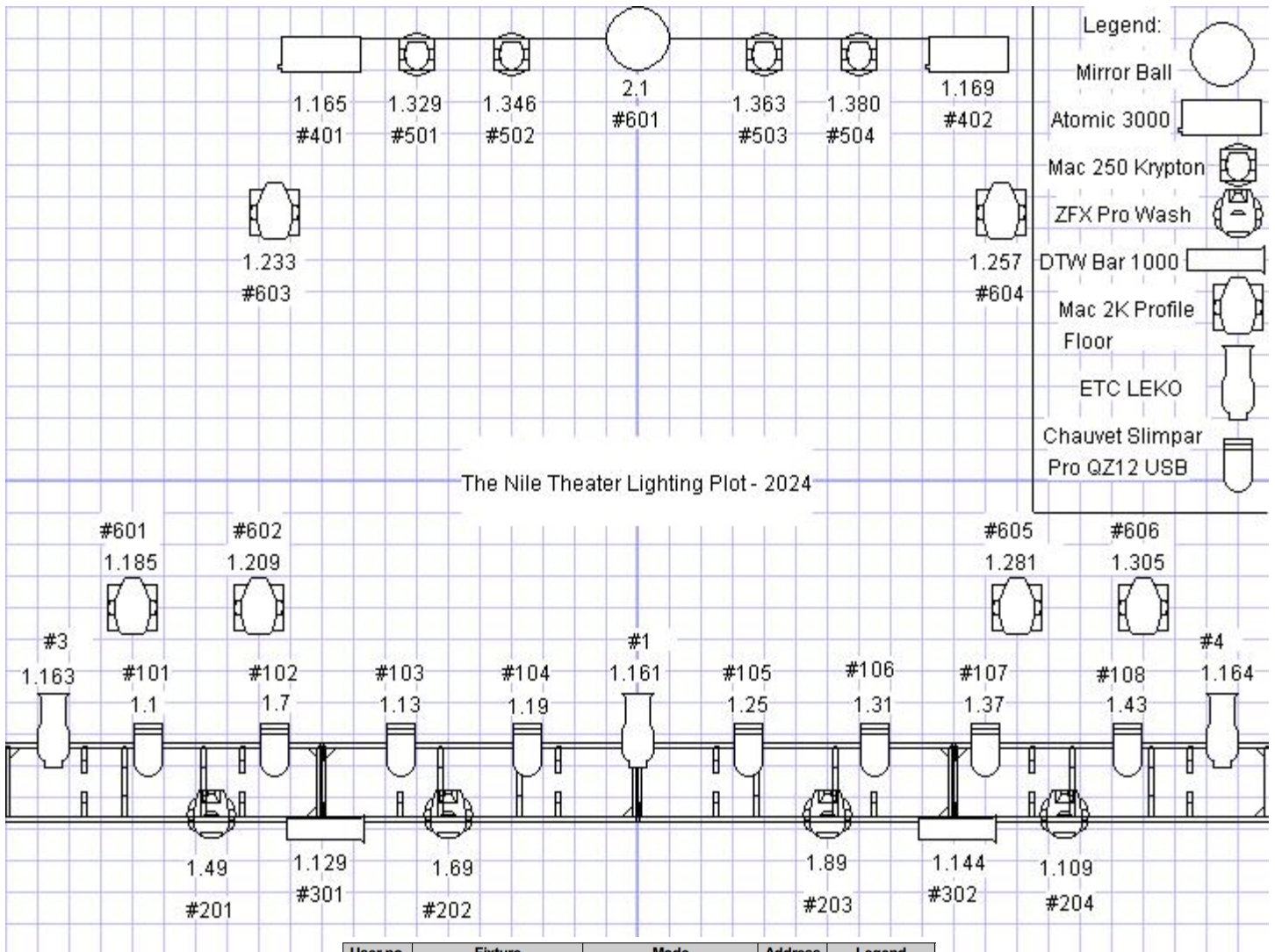
Barricade: 10 sections of steel (40ft)



Lighting:

- 8 - Chauvet Slim PAR PRO QZ12 USB (DS)
- 4 - Platinum Wash ZFX PRO Moving Light (DS)
- 2 - Elation DTW Bar 1000 (DS)
- 3 - 36 Degree ETC Leko DMX dimming control (DS)
- 2 - Martin Atomic 3K Strobe light (US)
- 4 - Martin Mac 250 Krypton Moving Light (US)
- 1 - 3' Mirror ball on DMX relay control spin (US)
- 2-Martin Mac Mini Wash (US)
- 6 – Martin Mac 2000 Profile (Woodruff Gobos) (Floor)
- Data Stream 4 Universal DMX-512 Optical Splitter
- Lighting control board - Avolites Titan Mobile (FOH)
- Version 15.1 Titan





User no.	Fixture	Mode	Address	Legend
1	Dimmer	Dimmer	1.161	LEKO
2	Dimmer	Dimmer	1.162	DIM
3	Dimmer	Dimmer	1.163	LEKO
4	Dimmer	Dimmer	1.164	LEKO
101	SlimPAR Pro QZ12 USB	6 DMX	1.1	QZ WASH
102	SlimPAR Pro QZ12 USB	6 DMX	1.7	QZ WASH
103	SlimPAR Pro QZ12 USB	6 DMX	1.13	QZ WASH
104	SlimPAR Pro QZ12 USB	6 DMX	1.19	QZ WASH
105	SlimPAR Pro QZ12 USB	6 DMX	1.25	QZ WASH
106	SlimPAR Pro QZ12 USB	6 DMX	1.31	QZ WASH
107	SlimPAR Pro QZ12 USB	6 DMX	1.37	QZ WASH
108	SlimPAR Pro QZ12 USB	6 DMX	1.43	QZ WASH
201	Platinum Wash ZFX Pro	Basic	1.49	ZFX MOVER
202	Platinum Wash ZFX Pro	Basic	1.69	ZFX MOVER
203	Platinum Wash ZFX Pro	Basic	1.89	ZFX MOVER
204	Platinum Wash ZFX Pro	Basic	1.109	ZFX MOVER
301	DTW BAR 1000	15 DMX	1.129	DTW 1k
302	DTW BAR 1000	15 DMX	1.144	DTW 1k
401	Atomic 3000	4 Channel	1.165	Atomic 3k
402	Atomic 3000	4 Channel	1.169	Atomic 3k
501	MAC 250 Krypton	16 Bit Extended, 17 DMX	1.329	250 Kryptn
502	MAC 250 Krypton	16 Bit Extended, 17 DMX	1.346	250 Kryptn
503	MAC 250 Krypton	16 Bit Extended, 17 DMX	1.363	250 Kryptn
504	MAC 250 Krypton	16 Bit Extended, 17 DMX	1.380	250 Kryptn
601	Mac 2000 Profile	24 DMX, 16-bit	1.185	Mac 2000P
602	Mac 2000 Profile	24 DMX, 16-bit	1.209	Mac 2000P
603	Mac 2000 Profile	24 DMX, 16-bit	1.233	Mac 2000P
604	Mac 2000 Profile	24 DMX, 16-bit	1.257	Mac 2000P
605	Mac 2000 Profile	24 DMX, 16-bit	1.281	Mac 2000P
606	Mac 2000 Profile	24 DMX, 16-bit	1.305	Mac 2000P
1001	Dimmer	Dimmer	2.1	MIRROR BALL
1002	Dimmer	Dimmer	2.2	BLUE LEDS
1003	Dimmer	Dimmer	2.3	Dim
1004	Dimmer	Dimmer	2.4	Dim
1005	Dimmer	Dimmer	2.5	Dim
1006	Dimmer	Dimmer	2.6	Dim
1007	Dimmer	Dimmer	2.7	Dim
1008	Dimmer	Dimmer	2.8	Dim

Video:

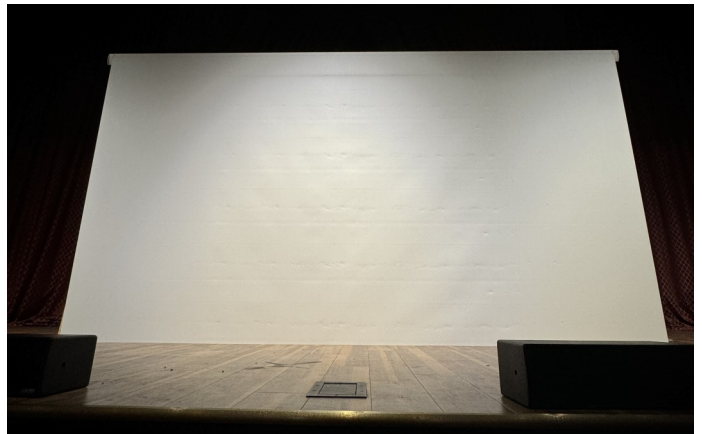
(10' W x 5'6" H) Zoom SD Edgeless Plasma Panel 3x3 - Located House Left

Black Magic Design ATEM Production Studio 4K (FOH)

Black Magic Design ATEM 1/ME Broadcast Panel (FOH)

(16' W x 9' H) Retractable Projection Screen hidden mid-stage

1 Wireless HDMI transmitter/receiver



Green Room:

Comfortable Seating

Refrigerator

TV Entertainment

Private Bathroom

Dressing room with mirrors

Marquee Outside Access

Wifi Access Available on site

No Showers or laundry at the venue



Load in/Out Entrance:

Location – Back Alley

Ramp from street level

Off Loading of equipment in the back alley straight to stage

Room for one bus and trailer in the alley at a time

Overflow parking in the front of the venue ([see next page](#))

The alley is shared with a Post office that cannot be impeded



Parking options:

Front of the venue parking

Coned off Day of show

Overnight parking available

No shore power available at the venue



Staff Directory

Matthew Spindler- Executive Director Matt@thebakersfieldfox.com

Jacque Morovich - Office Manager Jacque@thebakersfieldfox.com

Irin Mawhirter - Lead Technical Director Irin@thebakersfieldfox.com

Dunia Cantu - Assistant Theater Manager Dunia@thebakersfieldfox.com

Shipping Address:

The Historic Bakersfield Fox Theater

2001 H Street

Bakersfield, CA 93306

