



1721 19th St.

Bakersfield, CA 93301

(661) 324-1369

360 Seated Capacity

700 Standing capacity

Stage Size: 19'D x 32'W



Stage/Audio Power:

Isolated Power transformer to:

2 - 20 amp quad boxes Stage Left

2 -30 amp twist lock NEMA L14-30P Locking Plug

Non-Isolated Power:

5 - 20 amp outlets in stage

FOH Power:

4-20 amp outlets at FOH

Speaker/Amplification System

3 - EAW KF730 and 2 - EAW KF737 flown on 16' Sumner Eventer Lift per side.

Powered by : Crown I-Tech 8000 amps (Low)

Lab Gruppen C88:4- amps (MF/ HF)

EAW UX8800 Speaker/System processor

2 - EAW BH822e Sub Woofers under stage

Powered by: 2- QSC GX5 700 watt Power amps

4 - EAW UB 52 Front Fills- Powered by Crown CTS 2000

4 - EAW LA 212- 12" Monitors powered by Lab Gruppen C68:4 amps

2 - EAW NT26 Powered Monitors

Outputs: Left tops, Right tops, Sub, Front Fills, Monitors

Audio Mixing Board - Midas M32R (FOH)



Microphone List:

- 1 - Shure Beta 52a
- 6 - Shure SM58
- 5 - Shure SM57
- 5 - Shure SM81
- 6 - Sennheiser e604
- 2 - Shure SLXD4D Wireless Receiver
- 4 - Shure SM58 Wireless

Direct Input:

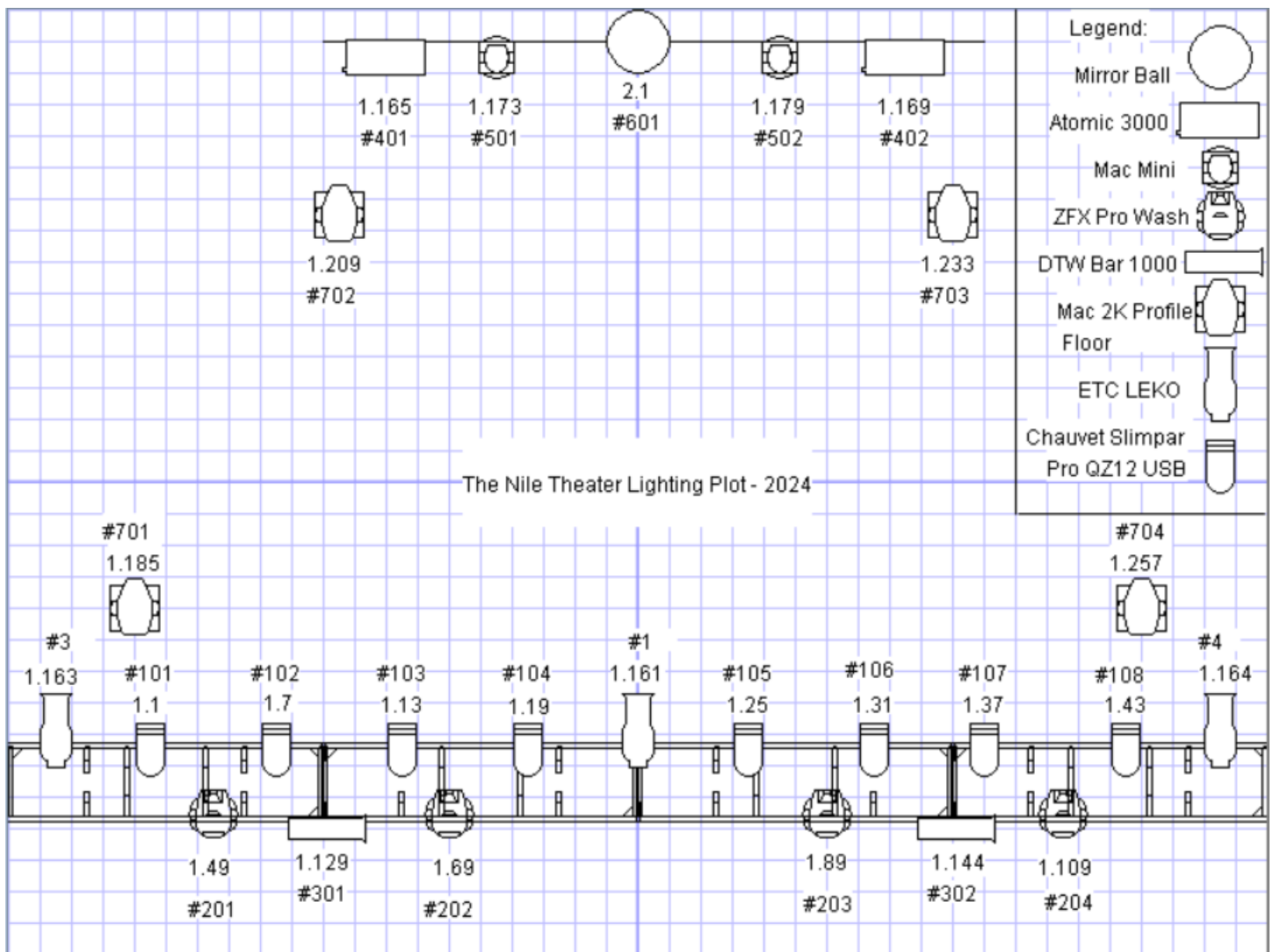
- 3 - Radial Engineering JDI Passive DI
- 3 - Countryman Type 85 FET DI Box

Lighting:

- 8 - Chauvet Slim PAR PRO QZ12 USB (DS)
- 4 - Platinum Wash ZFX PRO Moving Light (DS)
- 2 - Elation DTW Bar 1000 (DS)
- 3 - 36 Degree ETC Leko DMX dimming control (DS)
- 2 - Martin Atomic 3K Strobe light (US)
- 2 - 2 Martin MiniMac Wash Moving Light (US)
- 1 - 3' Mirror ball on DMX relay control spin (US)

Data Stream 4 Universal DMX-512 Optical Splitter
Lighting control board - Avolites Titan Mobile (FOH)
Version 15.1 Titan





User no.	Fixture	Mode	Address	Legend	Location	Pan Invert	Tilt Invert	Iris Invert	Pan Offset	Tilt Offset	P/T Swapped	Frozen	Notes	Items Used in
1	Dimmer	Dimmer	1.161	DM	Fixtures, 1.062	No	No	No	-	-	No	No		0
2	Dimmer	Dimmer	1.162	DM	Fixtures, 2.041	No	No	No	-	-	No	No		0
3	Dimmer	Dimmer	1.163	DM	Fixtures, 1.091	No	No	No	-	-	No	No		1
4	Dimmer	Dimmer	1.164	DM	Fixtures, 1.080	No	No	No	-	-	No	No		2
101	SlimPAR Pro QZ12 USB	6 DMX	1.1	QZ WASH	Fixtures, 1.064	No	No	No	-	-	No	No		8
102	SlimPAR Pro QZ12 USB	6 DMX	1.7	QZ WASH	Fixtures, 1.066	No	No	No	-	-	No	No		8
103	SlimPAR Pro QZ12 USB	6 DMX	1.13	QZ WASH	Fixtures, 1.068	No	No	No	-	-	No	No		8
104	SlimPAR Pro QZ12 USB	6 DMX	1.19	QZ WASH	Fixtures, 1.070	No	No	No	-	-	No	No		8
105	SlimPAR Pro QZ12 USB	6 DMX	1.25	QZ WASH	Fixtures, 1.072	No	No	No	-	-	No	No		8
106	SlimPAR Pro QZ12 USB	6 DMX	1.31	QZ WASH	Fixtures, 1.074	No	No	No	-	-	No	No		8
107	SlimPAR Pro QZ12 USB	6 DMX	1.37	QZ WASH	Fixtures, 1.076	No	No	No	-	-	No	No		8
108	SlimPAR Pro QZ12 USB	6 DMX	1.43	QZ WASH	Fixtures, 1.078	No	No	No	-	-	No	No		8
201	Platinum Wash ZFX Pro	Basic	1.49	ZFX MOVER	Fixtures, 1.085	No	No	No	-	-	No	No		14
202	Platinum Wash ZFX Pro	Basic	1.69	ZFX MOVER	Fixtures, 1.089	No	No	No	-	-	No	No		14
203	Platinum Wash ZFX Pro	Basic	1.89	ZFX MOVER	Fixtures, 1.093	No	No	No	-	-	No	No		14
204	Platinum Wash ZFX Pro	Basic	1.109	ZFX MOVER	Fixtures, 1.097	No	No	No	-	-	No	No		14
301	DTW BAR 1000	15 DMX	1.129	DTW 1k	Fixtures, 1.107	No	No	No	-	-	No	No		2
302	DTW BAR 1000	15 DMX	1.144	DTW 1k	Fixtures, 1.115	No	No	No	-	-	No	No		2
401	Atomic 3000	4 Channel	1.165	Atomic 3k	Fixtures, 1.011	No	No	No	-	-	No	No		2
402	Atomic 3000	4 Channel	1.169	Atomic 3k	Fixtures, 1.013	No	No	No	-	-	No	No		2
501	MinMAC Wash	Mode 2	1.173	MMacWash	Fixtures, 1.010	No	No	No	-	-	No	No		8
502	MinMAC Wash	Mode 2	1.179	MMacWash	Fixtures, 1.014	No	No	No	-	-	No	No		8
1001	Dimmer	Dimmer	2.1	MIRROR BALL	Fixtures, 2.001	No	No	No	-	-	No	No		1
1002	Dimmer	Dimmer	2.2	BLUE LEDES	Fixtures, 2.002	No	No	No	-	-	No	No		1
1003	Dimmer	Dimmer	2.3	Dim	Fixtures, 2.003	No	No	No	-	-	No	No		0
1004	Dimmer	Dimmer	2.4	Dim	Fixtures, 2.004	No	No	No	-	-	No	No		0
1005	Dimmer	Dimmer	2.5	Dim	Fixtures, 2.005	No	No	No	-	-	No	No		0
1006	Dimmer	Dimmer	2.6	Dim	Fixtures, 2.006	No	No	No	-	-	No	No		0
1007	Dimmer	Dimmer	2.7	Dim	Fixtures, 2.007	No	No	No	-	-	No	No		0
1008	Dimmer	Dimmer	2.8	Dim	Fixtures, 2.008	No	No	No	-	-	No	No		0

Video:

(10' W x 5'6" H) Zoom SD Edgeless Plasma Panel 3x3 - Located House Left

Black Magic Design ATEM Production Studio 4K (FOH)

Black Magic Design ATEM 1/ME Broadcast Panel (FOH)

(16' W x 9' H) Retractable Projection Screen hidden mid-stage



Green Room:

Comfortable Seating

Refrigerator

TV Entertainment

Private Bathroom

Marquee Outside Access

Wifi Access



Load in/Out Entrance:

Location – Back Alley

Ramp from street level

Off Loading of equipment in the back alley

Parking across the street from the front of the venue



Staff Directory

Matthew Spindler- Executive Director Matt@thebakersfieldfox.com

Jacque Morovich - Office Manager Jacque@thebakersfieldfox.com

Irin Mawhirter - Lead Technical Director Irin@thebakersfieldfox.com

Dunia Cantu - Assistant Theater Manager Dunia@thebakersfieldfox.com

