



**2001 H Street**

**Bakersfield, CA 93301**

**(661) 324-1369**

**1,552 Seat Capacity**

# Parking



## Stage Size

27'D x 48'W



## Pit Size

11'6"D x 42'W x 4'H



## Proscenium Dimensions

48'Wx26'11"H

## Grid Height

60'

## SL Wing

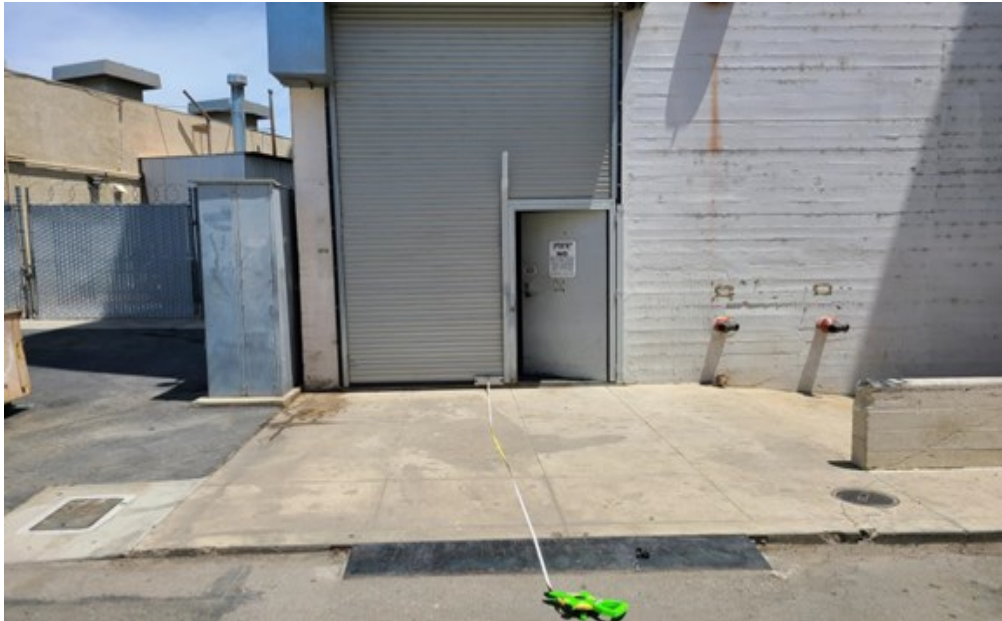
16'18"W x 24'7"D

## SR Wing

12'W x 24'7"D

# Loading Doors (Alley Stage Floor Access)

8'W x 13' 6"H



13'5" from alley to loading door



34'10" from stage door to warehouse storage door

# Shore Power

50A/125/250v

Located outside of stage load in door



# Stage Power

400 AMP 120/208 3 Phase Upstage Right with Cam Lock Connectors

no reverse

200 AMP 120/208 3 Phase Upstage Right (Transformer Isolated)



150 AMP 120/208 Downstage Left (Transformer Isolated)

150 AMP 120/208 Downstage Left with Cam Lock Connectors no  
reverse



20 AMP (3) 120 Upstage Center Stage feeds  
(Transformer Isolated) 29' Quads





# Communication

Wireless Broadband Internet  
Clearcom Base Station

## Dressing Rooms (Upstairs Stage Left)

(1) 10' x 16'

(3) 8'3" x 9'1"

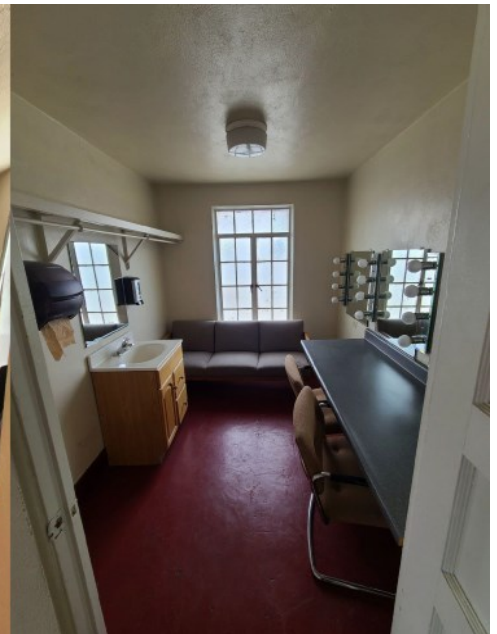
(1) 10' x 9'6"



10' x 9'6"



10' x 16'



8'3" x 9'1"

# **Green Room/Production Room Stage Level (Stage Left)**

12' x 20'

Wired Internet in Green Room

Wifi also available



## **Video Projection**

21'x46' Front projection screen

White CYC curtain

Christie CP4220 projector 22k Lumens

Extron DTP USW 333 Three Input Switcher with Integrated Long Distance DTP Transmitter and Audio Embedding- Video and Audio Send from Stage to Booth

Kramer 4x2 HDMI Matrix Switcher VS-42UHD- video switcher up in booth



## **AP Lighting:**

14 - Source 4 Lekos w/ 19-degree barrels 4 w/ 10 degree

(On Balcony Rail)

## **US Lighting:**

32 - Source 4 Pars on Pre-wired Lamp Bars

## **MS Lighting:**

32 - Source 4 Pars on Pre-wired Lamp Bars

## **DS Lighting:**

64-1000w Par 64 Par Cans, Wide Lamps on double hung truss

8 – Mac 2k Performance

2 – 1000w 4 light moles

## **Ground Package:**

8 – Mac 2k Profile



## **Console:**

1-Avolites Sapphire Touch

1– Avolites Diamond Elite 4

4 – Hardwired 5-wire DMX control cables to FOH

2 – Hardwired Cat6 Control cables to FOH

2– Isolated 15 AMP 120 circuits on Edison plugs at FOH

## **Dimmers:**

1 - 36 Channel Leprecon Dimmer Rack

1 - 36 Channel Leprecon Dimmer Rack with 6 Edison female Inputs for Patching

2- Lightronics 12 CH. X 1200 Watt DMX/LMX rack mounted dimmers

## Truss:

1- 40 Foot Truss hung with 2-One Ton Chain motors, hung 16' off the DS, rope ladder, all fall protection gear, and front black valance

1- Four way Skjonberg Chain Motor Control

1- 47' foot drape truss, located far Up Stage, consists of Three 17', One 3', Four 10' sticks of truss. DT/GTA Global Truss

### F34 Square Truss

**Tubes:** 50mm (1.97in); **Wall Thickness:** 2mm (0.08in); **Braces:** 20mm (0.8in)

**Truss Size:** 290mm (11.41in) x 290mm (11.41in); **Material:** EN-AW 6082 T6

	2m(6.65ft)	4m(13.12ft)	6m(19.68ft)	8m(26.24ft)	10m(32.81ft)	12m(39.36ft)
<b>Total Load</b>	6269.39lb	4346.65lb	2944.13lb	2240.89lb	1742.21lb	1350lb
<b>Distrib. Load Per Ft.</b>	955.7lb	331.3lb	149.9lb	85.4lb	53.1lb	34.3lb
<b>Deflection</b>	0.1in	0.5in	1.3in	2.3in	3.6in	5in
<b>Center Point Load</b>	4231.4lb	2176.3lb	1477.4lb	1117.9lb	868.8lb	679.1lb
<b>Deflection</b>	0.1in	0.4in	1in	1.8in	2.9in	4.1in

4-¼ Ton Chain Motors

10-1 ton chain motors

2- Three phase motor distros.

Six of the ten are used to hang the PA

Two of the ten are used to hang the lighting

Two are spares.

## Spotlights:

4 - LYCIAN Super Star 2.5 - Long life 2500W single-ended HMI / MSR metal halide lamp, 5600K color temperature

## Hazer:

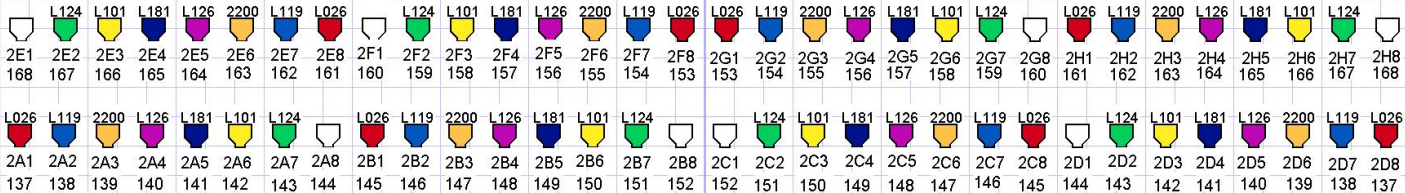
1 - Star Hazer 2 (DMX capability)- Oil Based

## ACL:

4- lamp bars with 4-1000w Par 64 Par Cans, Wide Lamps each,  
would need to be hung during load in

US

22' from Downstage edge



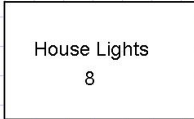
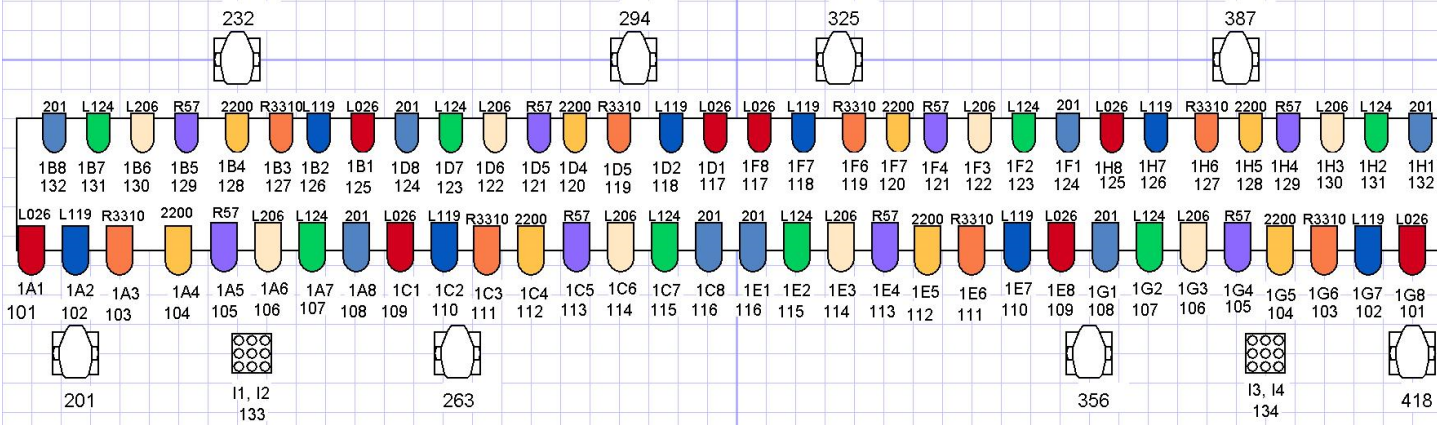
MS

20'7" from Downstage edge



FOH Truss

16' from Downstage edge



AP Lighting

77'4" from Downstage edge





## **Additional Equipment:**

2- Martin Mini Mac Washes

2 – 1000w DMX Wildfire Blacklight

2 – 1000w Atomic 3000 Strobe

4 – 10 degree lenses

3- 19 degree lenses

3- 36 degree lenses

2- 26 degree lenses for Source 4 Lekos

2– Gobo holders A size and B size for Source 4 Lekos

2- 1 Ton Lodestar Chain Motors

## **Clear-Com Intercom System:**

1- Main station

9 – Headsets with belt packs



# Sound Equipment List

## Front of House Consoles

Midas M32 Console

Midas M32R Console

Midas S32 32 Inputs x 16 Outputs Digital Stagebox

## Touring FOH Position

Located at the rear of the Center Orchestra section underneath the balcony overhang  
90' from the lip of the stage-

24' x 8' area, enclosed by a retaining wall.

Approximate cable run to FOH: 160'

## Touring on Stage

### Suggested Positions

Sound SL

Lighting SR



(2) 20 amp circuits at FOH Position



(2) Clearcom Connections



(2) Ethercon connections that connect to SL Ethercon Wall plate



## **Speaker/ Amplification System**

12-L'Acoustic Kara II flown per side

3-L'Acoustic KS21 Flyable subs flown per side

2-L'Acoustic KS28 subs on the ground in the pit

4-L' Acoustic X8 across the stage for Front Fills.

Outputs are Left tops, Right tops, Sub, and Front Fills

All amps are LA4X US and LA12X US.

## **Monitors**

4-EAW LA 212- 12" Monitors powered by Lab Gruppen C68:4 amps

2-EAW NT26 Powered Monitors

2-ZZ Top's Custom built Show Co. 12" Monitors powered by Crown CTs 1200

4- ZZ Top's Custom built Show Co. 12" Monitors

## **Microphones/ ETC**

1-Shure MX418 D/C Cardioid Condenser Desktop Microphone

1-Shure Beta 52a

4-Shure Beta 87

5-Shure SM58

5-Shure SM57

5-Shure SM81

1-Shure Beta 91

4-Shure Beta 98

1-Crown PCC160

1-Shure KSM32

4- Shure QLDX4 Wireless Handheld mic with Beta 87A Capsules and SM58 Capsules

1- Radial JPC Stereo PC DI

1-Horizon Straightline Passive DI

1-Rapco DB-100 DI

2-Ramtech Passive DI

1-Rapco DP-200 Stereo DI

3-Behringer Ultra ModRadial Engineering JDI Passive DI

3- Radial Engineering J48 Active DI

3- Countryman Type 85 FET D.I. Box

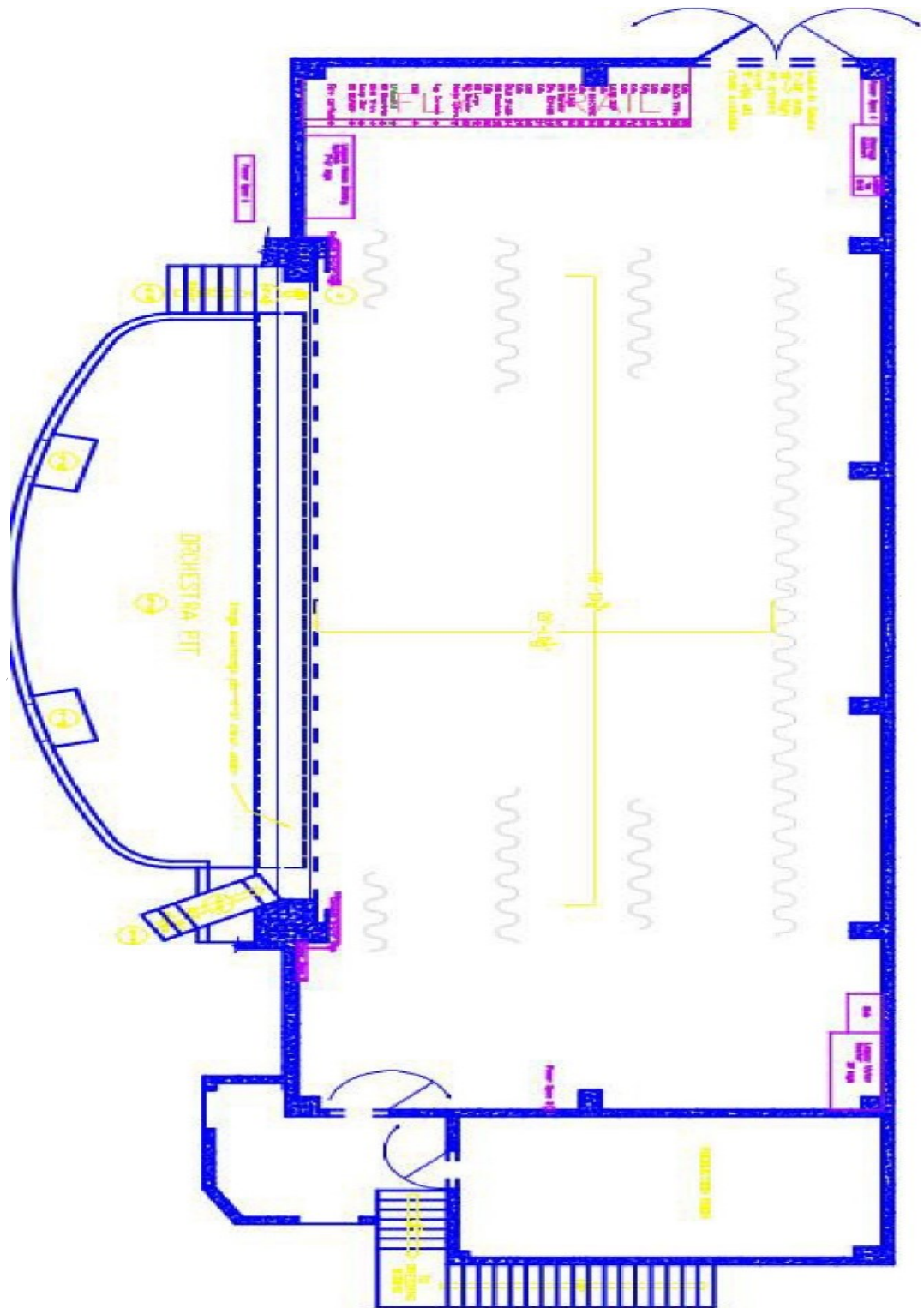
# Lifts

Genie AWP-24

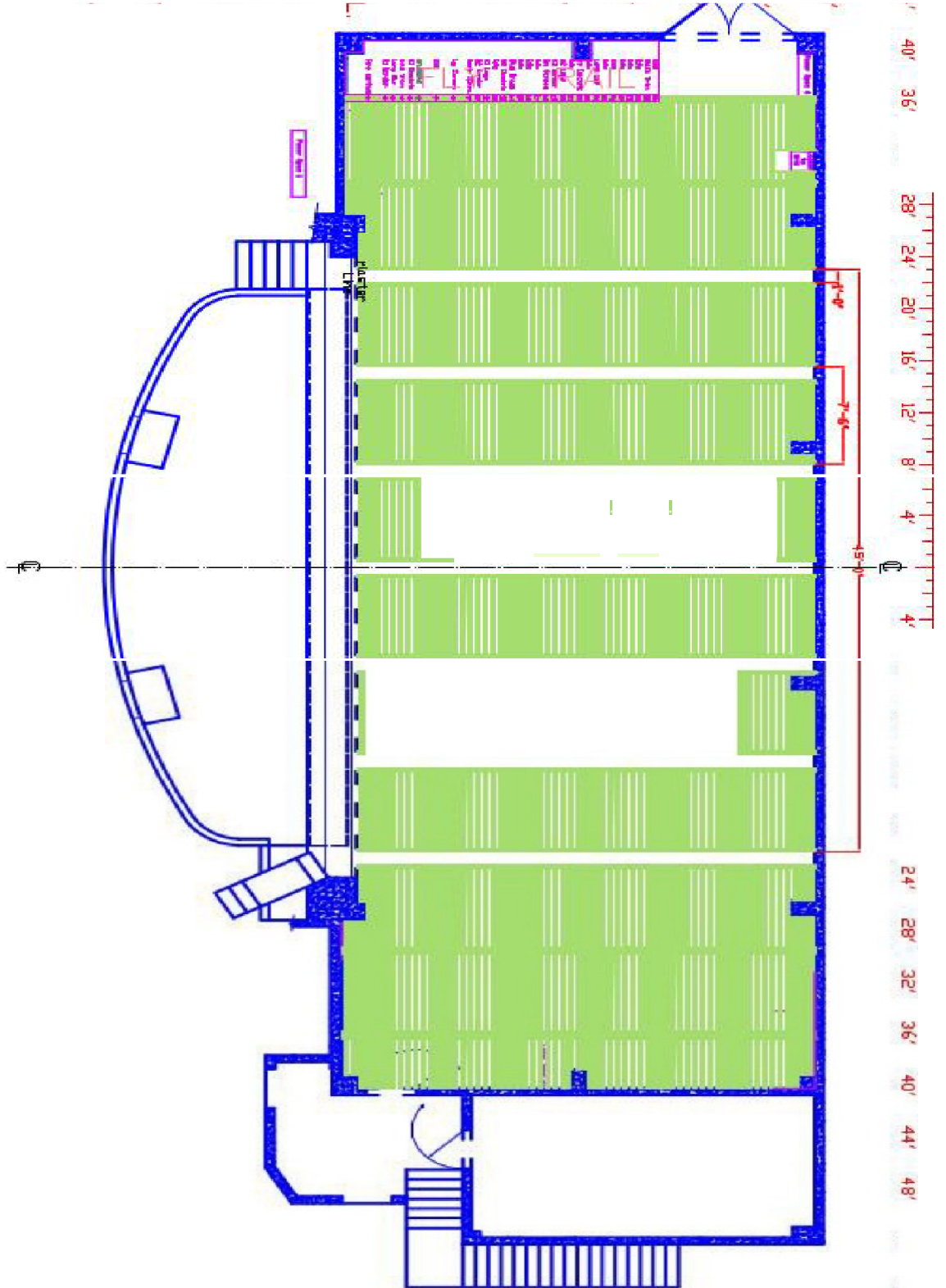
Working height 30 ft Lift Capacity  
300 Lbs



# Bakersfield Fox Theater Plan with Drapes Model with dimension



# Bakersfield Fox Theater Plan with Grid Model



<b>Line</b>	<b>Distance from Plaster Line</b>	<b>Equipment on Line</b>
1	1'2"	Fire Curtain
2	2'3"	Border
3	3'1"	Open
4	4'2"	Gold Traveler
5	5'4"	Electric
6	Unusable	
7	7'	Open
8	9'7"	Large Screen
9	10'4"	Movie Sound Baffle
10	11'	Border
11	11'8"	Legs
12	12'5"	Open
13	13'	Electric
14	13'8"	Blue Drape
15	14'5"	Open
16	15'1"	Open
17	15'9"	Open
18	16'5"	Open
19	17'1"	Border
20	17'9"	Legs
21	18'6"	Open
22	19'2"	Electric
23	19'11"	MS Pars
24	20'8"	Open
25	21'5"	Open
26	22'1"	US Pars
27	22'10"	Open
28	23'7"	Open
29	24'8"	Open
30	24'11"	Traveler Black Backdrop
31	25'2"	CYC Curtain
	25'5"	Truss for Backdrops



## Risers

Four 4'x8'x16"

Thirteen 4'x8'x24"

## Staff Directory

Matthew Spindler- Executive Director

[Matt@thebakersfieldfox.com](mailto:Matt@thebakersfieldfox.com)

Nicolas Gardner- Lead Technical Director

[Nick@thebakersfieldfox.com](mailto:Nick@thebakersfieldfox.com)

Ally Lara-Assistant Theater Manager

[Allyson@thebakersfieldfox.com](mailto:Allyson@thebakersfieldfox.com)